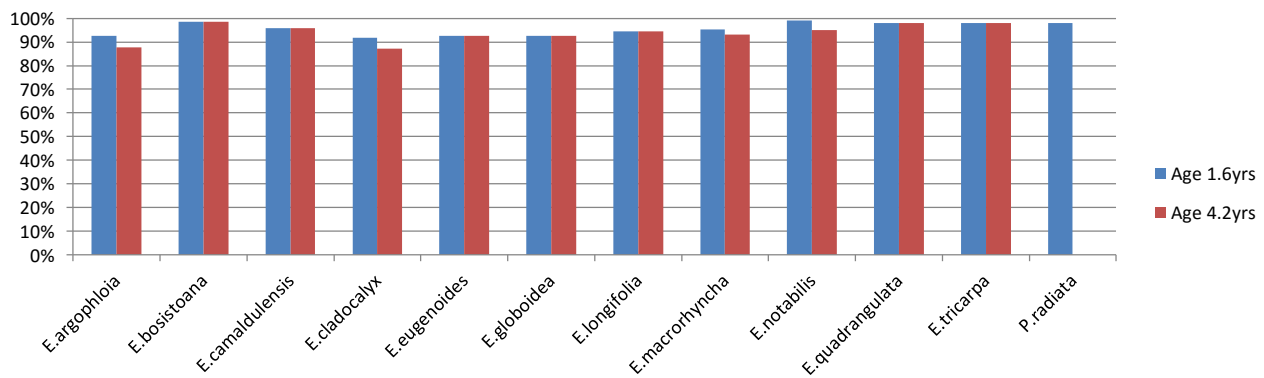


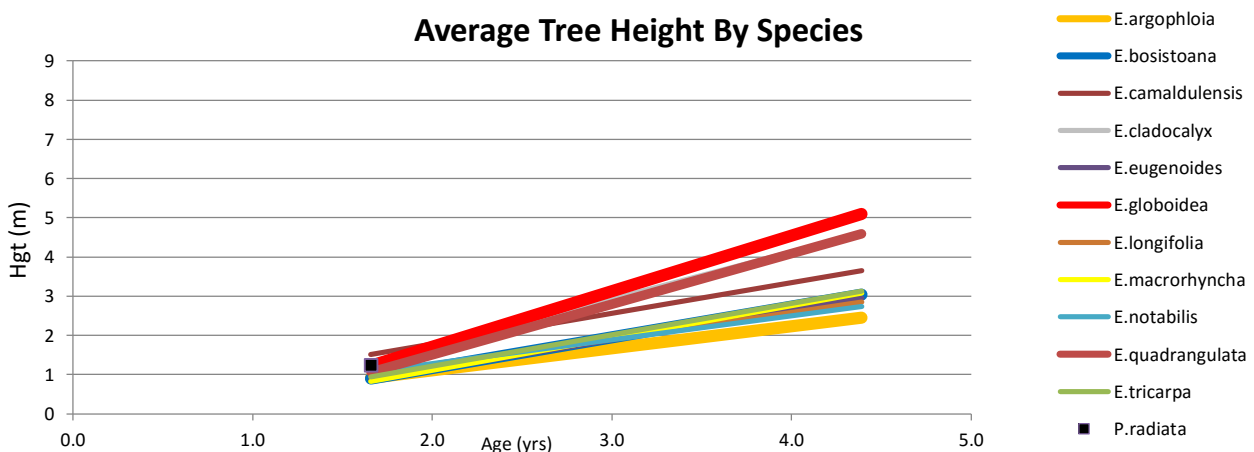
TRIAL SUMMARY: WISHART 2011 DEMO TRIAL

Species	No. Hgt Trees		Min Hgt (m)		Avg Hgt (m)		Max Hgt (m)		% Survival	
	Age		Age		Age		Age		Age	
	1.7	4.4	1.7	4.4	1.7	4.4	1.7	4.4	1.7	4.4
<i>E. argophloia</i>	109	129	0.6	0.7	0.9	2.4	1.7	4.8	93%	88%
<i>E. bosistoana</i>	129	137	0.1	0.8	0.9	3.0	2.2	5.6	99%	99%
<i>E. camaldulensis</i>	138	139	0.8	1.8	1.5	3.6	3.1	7.0	96%	96%
<i>E. cladocalyx</i>	117	126	0.5	0.9	1.3	4.6	3.3	8.3	92%	87%
<i>E. eugenoides</i>	103	136	0.5	0.6	0.9	2.9	1.6	6.2	93%	93%
<i>E. globoidea</i>	126	128	0.6	1.7	1.2	5.1	2.6	8.3	93%	93%
<i>E. longifolia</i>	122	136	0.5	0.5	1.0	2.8	1.9	5.8	95%	95%
<i>E. macrorhyncha</i>	119	127	0.5	0.6	0.8	3.1	1.6	6.0	95%	93%
<i>E. notabilis</i>	86	88	0.5	0.5	1.1	2.7	2.1	4.8	99%	95%
<i>E. quadrangulata</i>	137	143	0.6	1.7	1.1	4.6	2.1	6.7	98%	98%
<i>E. tricarpa</i>	125	137	0.5	0.8	0.9	3.1	1.8	6.7	98%	98%
<i>P. radiata</i>	96	-	0.6		1.2		1.8		98%	

Survival By Species and Age



Average Tree Height By Species



Max Tree Height By Species

