



**Te Uru Rākau**  
Forestry New Zealand

# One Billion Trees Fund

Overview

# Intent of 1 Billion Trees Programme

The Government developed the One Billion Trees Programme to increase tree planting across New Zealand.

The goal is doubling the current planting rate to reach one billion additional trees by 2028.

The programme is starting to deliver on the projected benefits for New Zealand's environment, communities, and economy.



# Overview of 1 Billion Trees Programme

- The 1BT fund is **one part** of the wider One Billion Trees Programme, including Matariki Tū Rākau, H.C.E, etc.
- 2 contestable funds established:
- A tree planting GRANTS scheme (targeting approx. 2/3 of planting in indigenous species)
- A PARTNERSHIP fund to provide financial support for key activities that enable planting- including training, Land Use Advice, etc.



# Overview of 1 Billion Trees Fund

- Fund intended to run from 1 Jan 2019 - Jun 2021
- Approx \$200.3 million made available initially
- 4 teams- Engagement and Monitoring (Erica Smith and myself + Wellington data team)  
Partnerships and Grants advisors + admin, Forest and Land Use (FALU)
- Approximately 40 FDGP staff across the country from Invercargill to Whangarei (50% Rotorua based- with a new building under construction)





# Outcomes as at Dec 2020 (Nationwide)

- \$154.5 million had been allocated to Grants and Partnerships projects, over  $\frac{3}{4}$  of total funding available.
- \$35 million of the fund was re-allocated to Jobs for Nature- providing jobs and economic support for people and communities across New Zealand to assist with the **Covid-19** recovery, while ensuring environmental benefits.
- \*\*Wairoa Post-Covid 19 recovery document led by TToTW and NP, with WDC.
- The 1BT fund has directly funded the planting of **43,557,000** trees and is on track to achieve its objective of funding 2/3rds indigenous tree species.
- The fund is now closed to new applications, but work will continue providing advice and guidance, milestone assistance etc. to contracted groups



# Overview of Approved Grants in HB

Te Uru Rakau has helped fund (to End of Feb 2021):

- Approximately 3800 hectares of new planting in the Hawkes Bay Region (HBR)
- Across a number of projects, 65 in total.
- Species include; Durable Eucalypt and general Eucalyptus species
- Exotic species such as Giant Redwoods, Douglas Fir, and Pinus Radiata
- Along with mixed Indigenous trees and Manuka

The planting projects were scheduled for the 2019, 2020 and 2021 planting seasons.

This equates to a total investment in the HBR from the One Billion Trees Fund of \$8.1 million (93% of applications gone to contract).





## One Billion Trees Fund Grants Approved in Hawke's Bay Region

1BT Approved Species	Hectares (ha)
<i>Eucalyptus bosistoana</i>	36.33
<i>Eucalyptus cladocalyx</i>	19.73
<i>Eucalyptus globoidea</i>	111.73
<i>Eucalyptus</i> in general	91.37
<i>Eucalyptus muelleriana</i>	4.99
<i>Eucalyptus saligna</i>	12.64
<i>Pinus radiata</i>	826.71
Douglas fir	10.66
Coastal Redwood	58.98
Giant Redwood	59.10
Mixed indigenous species	1259.33
Totara	2.95
Manuka	1794.37
<b>Grand Total</b>	<b>4288.89</b>

Eucalyptus  
(*Bosistoana*,  
*Cladocalyx*, *Globoidea*,  
in general,  
*Muelleriana*, *Saligna*)

- 1 to ≤ 10 ha
- 10 to ≤ 100 ha
- 100 to ≤ 250 ha

Exotic (*Pinus Radiata*,  
Douglas Fir)

- 1 to ≤ 10 ha
- 10 to ≤ 100 ha
- 100 to ≤ 250 ha
- 250 to ≤ 1000 ha

Redwood (Coastal,  
Giant)

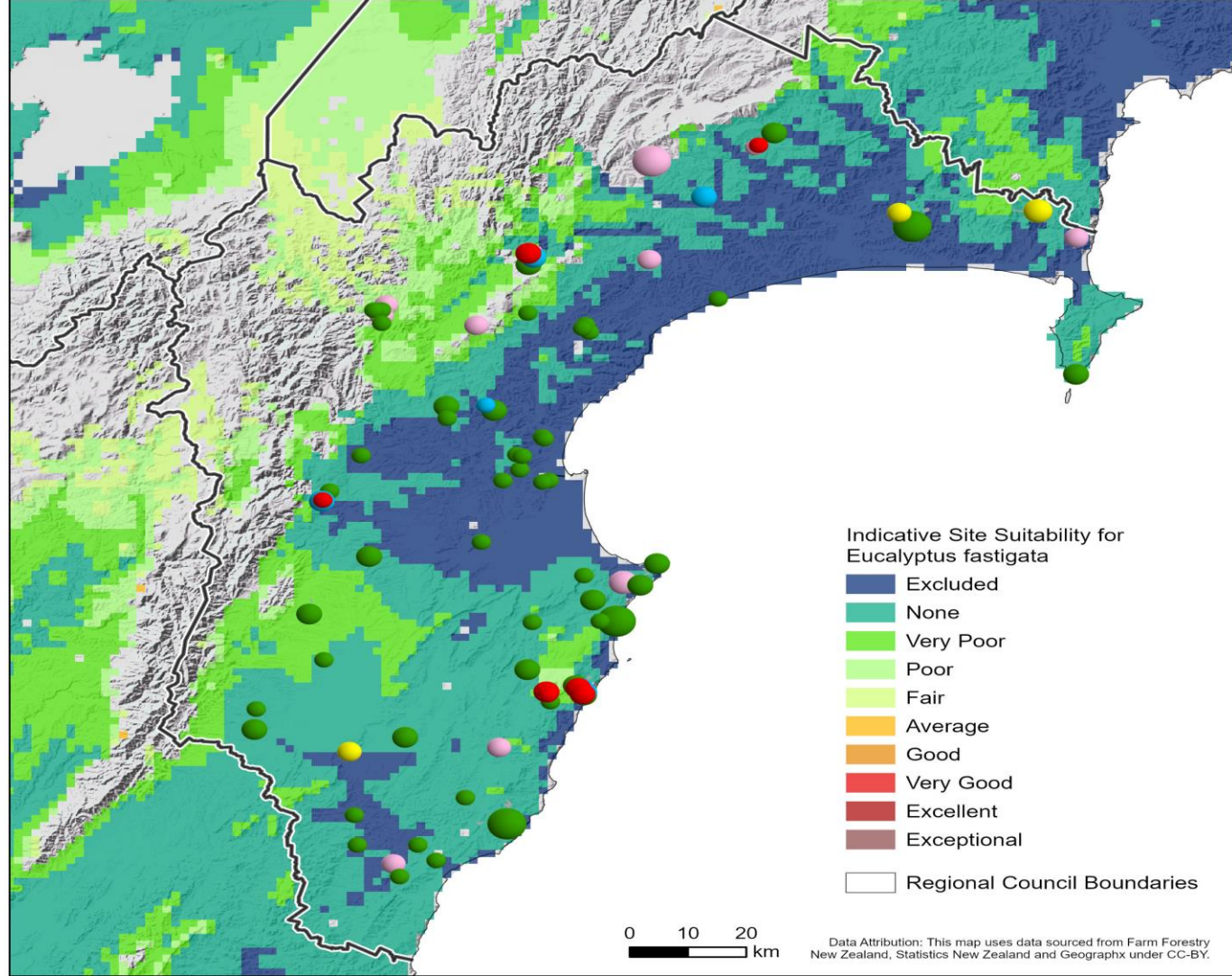
- 5 to ≤ 10 ha
- 10 to ≤ 100 ha
- 100 to ≤ 250 ha

Indigenous Species  
(incl. Totara)

- 1 to ≤ 10 ha
- 10 to ≤ 100 ha
- 100 to ≤ 250 ha

Manuka

- 1 to ≤ 10 ha
- 10 to ≤ 100 ha
- 100 to ≤ 250 ha
- 250 to ≤ 1000 ha



Indicative Site Suitability for  
*Eucalyptus fastigata*

- Excluded
- None
- Very Poor
- Poor
- Fair
- Average
- Good
- Very Good
- Excellent
- Exceptional

Regional Council Boundaries

0 10 20  
km

# TUR Contacts

For any general question and enquiries please contact advisers listed below.

**Dougal Morrison** – Senior Adviser Forest Grants, **Grants queries and information**

Telephone: 04 831 4909 Mobile: 027 470 0658 Email: [Dougal.Morrison@mpi.govt.nz](mailto:Dougal.Morrison@mpi.govt.nz)

**Duncan Harrison** – Senior Forest Adviser, **Forest and Landuse Advice/ETS queries**

Telephone: 06 869 0872 Mobile: 021 534 038 Email: [Duncan.Harrison@mpi.govt.nz](mailto:Duncan.Harrison@mpi.govt.nz)

**Jarrold Wilkinson-Smith** – Strategic Relationship Adviser, **1BT Engagement & Monitoring**

Mobile: 027 874 008 Email: [Jarrod.Wilkinson-Smith@mpi.govt.nz](mailto:Jarrod.Wilkinson-Smith@mpi.govt.nz)

**Erica Smith** – Strategic Relationship Adviser, **1BT Engagement & Monitoring**

Telephone: 03 303 1019 Mobile: 027 303 2142 Email: [Erica.Smith@mpi.govt.nz](mailto:Erica.Smith@mpi.govt.nz)

